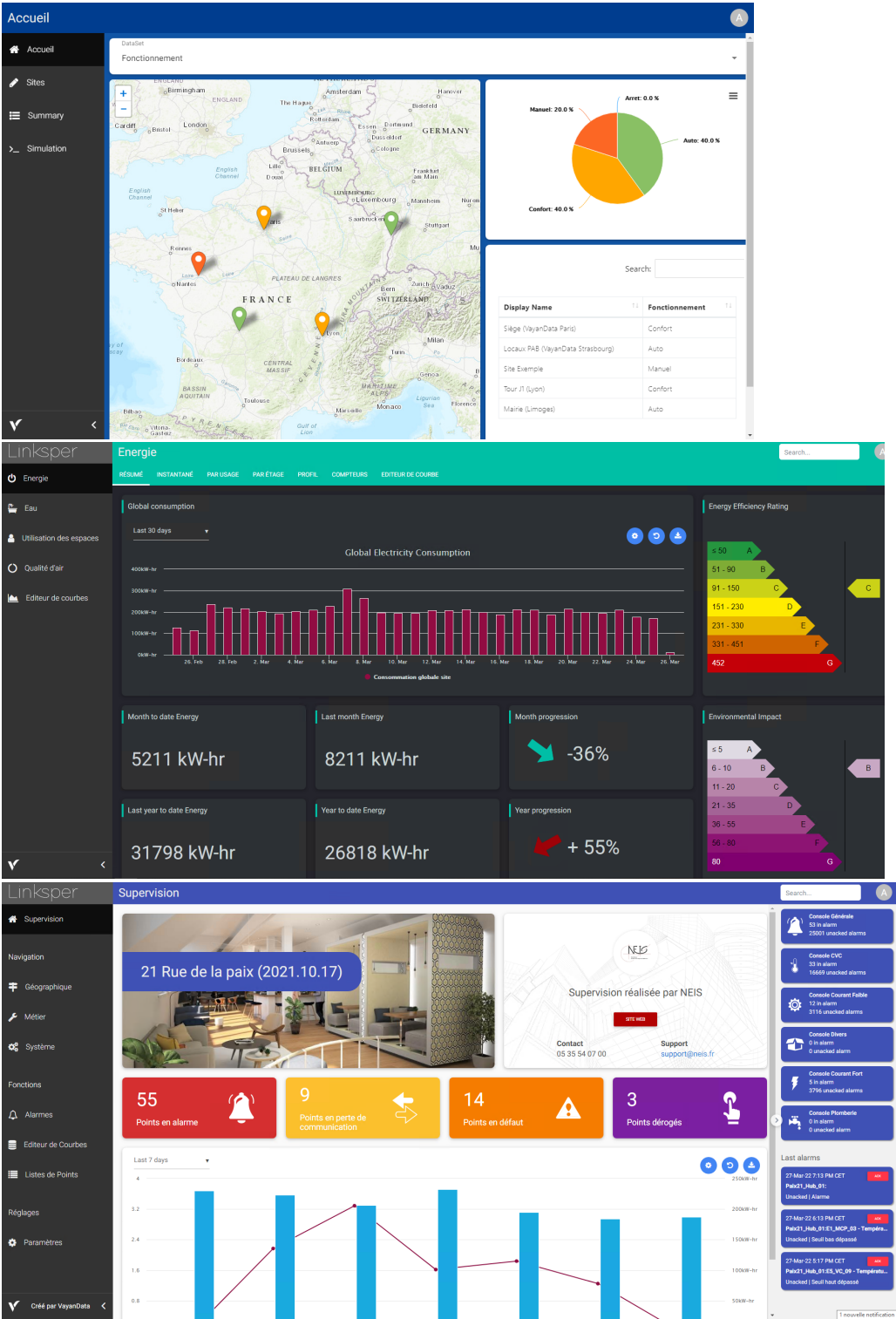


# FlexView

## Description

The FlexView is a customizable dashboard for organizing views together through different **pages** and **cards**. The FlexView acts as a classic Niagara px view on the top of components and you can add it to any components in the station.

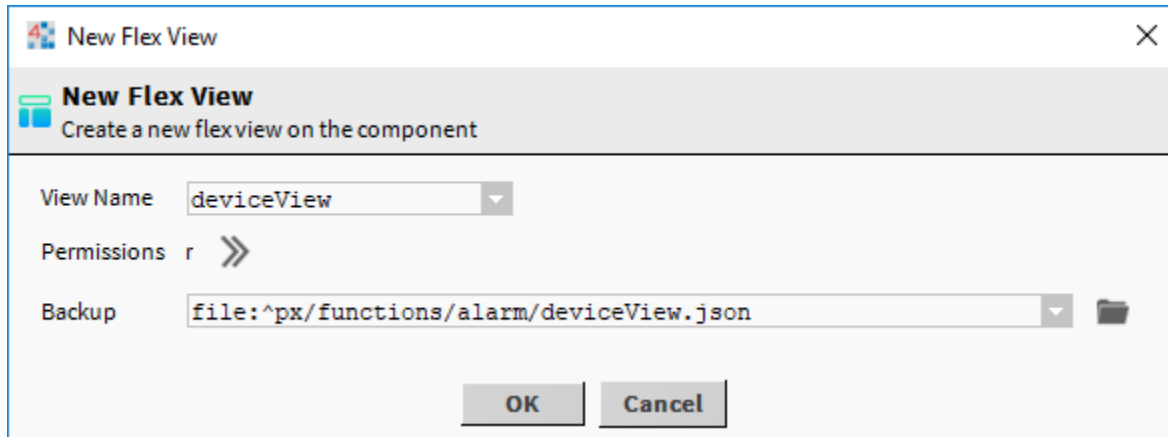




By default the FlexView keeps the session alive for the current connected user. To change this behavior, go to the FlexPane component in the station and change the value of *keep Alive* boolean.

### Implementation

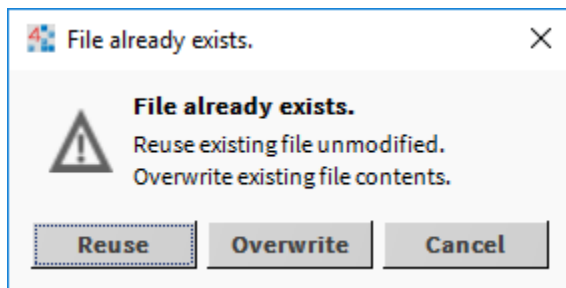
To add a new FlexView to a component, right-click on a component and go to *Views > New Flex View*.



The 'New Flex View' dialog box is shown. It has a title bar with a close button. Below the title bar is a header area with the text 'New Flex View' and 'Create a new flexview on the component'. The main area contains three fields: 'View Name' with a dropdown menu showing 'deviceView', 'Permissions' with a dropdown menu showing 'r' and a right-pointing arrow, and 'Backup' with a text input field containing 'file:^px/functions/alarm/deviceView.json' and a folder icon. At the bottom are 'OK' and 'Cancel' buttons.

- Enter the name of the view to create as you would do for a .px
- Select the permissions
- Select where the backup of the dashboard will be created. It works the same as a px. You can reuse an existing backup file if you want to create some relative dashboards.

If it already exists, it will ask you whether you want to override the existing dashboard or reuse it



The 'File already exists.' dialog box is shown. It has a title bar with a close button. Below the title bar is a header area with the text 'File already exists.' and a warning icon. The main area contains the text 'File already exists.', 'Reuse existing file unmodified.', and 'Overwrite existing file contents.'. At the bottom are 'Reuse', 'Overwrite', and 'Cancel' buttons.

The Flex View is now a view on your component and you can start filling it.



The 'Flex View' editor interface is shown. It has a teal header bar with a 'Flex View' title, navigation icons (back, forward, refresh, undo, redo, zoom in, zoom out), and a 'SAVE' button. Below the header bar is a 'Page 1' tab. The main area is a large, empty light gray rectangle. In the bottom right corner, there are two small icons: a pencil and an eraser.

**⚠ To display the production view the user must have admin write rights on the *ProgramService*.**

To test it, take any component from the nav tree and drag&drop it in the middle. "Services" for example.

- Give a name to the card
- Select an agent. An agent is a view on the component. The Property is one of the default agents on components.
- Click on add

You will get a nice card

Display Name	Value	Commands
▶ AlarmService	Alarm Service	
▶ BackupService	Backup Service	
▶ CategoryService	Category Service	○
▶ JobService	Job Service	
▶ RoleService	Role Service	
▶ UserService	User Service	
▶ AuthenticationService	Authentication Service	
▶ DebugService	Log Configuration	
▶ BoxService	Box Service	
▶ FoxService	Fox Service	○
▶ HierarchyService	Hierarchy Service	
▶ HistoryService	History Service	○

---

## FlexView main concepts

Understand the different parts of the FlexView

---

## FlexView advanced concepts

Set up user rights

---

## FlexView Cards

Browse the available cards

---

## Get started

