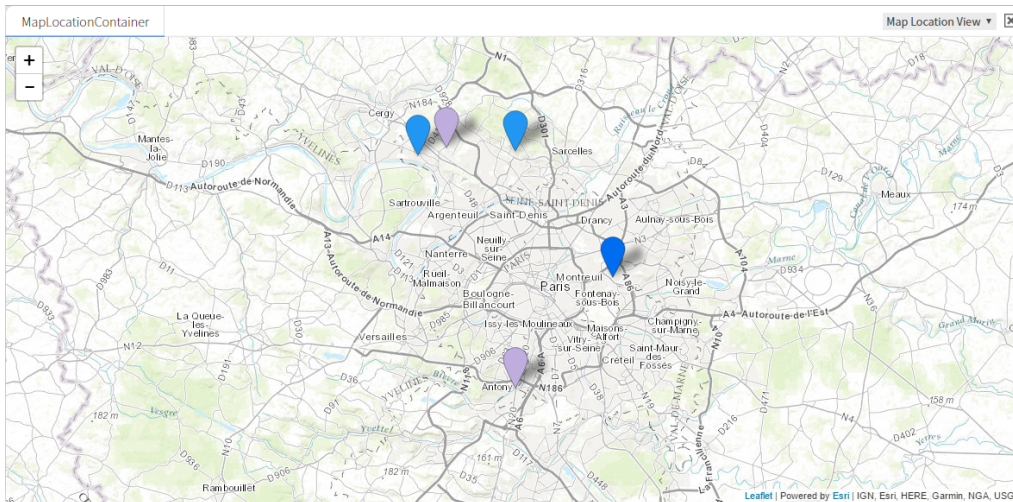


Map

The components of the Map folder are used to display markers on a map each representing a site and its status in real time.



The map is based on the payable Arcgis system, distributed by ESRI in France. It is necessary to create an account beforehand to obtain the use keys and to take out a subscription (from € 20/month for 1,000,000 images)

- [Creating and configuring an Arcgis for Developers account](#)
- [MapAddress](#)
- [MapCoordinates](#)
- [MapLocationContainer](#)
- [ClusterConf](#)
- [MarkerDisplayValue](#)
- [MarkerDisplaySFormat](#)

Training

You can follow this e-learning course to practice

